

134 Brighton Road

Coulsdon

Surrey

CR5 2ND

0208 660 0189

www.bond-sherwill.com

sales@bond-sherwill.com

BOND & SHERWILL



Woodman Road

This three-bedroom, chain-free, semi-detached house with garage and off-street parking to the side of the garage is in a friendly cul-de-sac location. Approximately 0.4 miles from both Coulsdon South & Coulsdon Town railway stations which are on different lines.

- * Located on the edge of Coulsdon town centre offering convenient shopping at Waitrose, Aldi, Tesco Express as well as great restaurants and a mix of independent shops.
- * South-West facing, low maintenance, rear courtyard
- * Perfect for commuters, fast trains to London Bridge / Victoria from Coulsdon South.
- * M23 / M25 can be accessed nearby for links to Gatwick, Heathrow & the South Coast.
- * Full range of schools, and nurseries within the local area.
- * Contemporary kitchen with integrated appliances.
- * Dual-aspect lounge/dining room with light and airy feel.
- * Light oak engineered wood flooring to lounge/dining room, hall, kitchen and W.C.
- * Woodman Road is part of the London Loop way for walkers and cyclists. The local area is rich in green belt countryside for outdoor pursuits.

OIRO £ 475,000

These particulars are intended to give a fair description of the property but their accuracy cannot be guaranteed, and they do not constitute an offer of contract. Intending purchasers must rely on their own inspection of the property. None of the above appliances/services have been tested by ourselves. We recommend purchasers arrange for a qualified person to check all appliances/services before legal commitment.

BOND & SHERWILL

Woodman Road

Porch

Triple-aspect, five frosted-effect double-glazed windows and a frosted-effect double-glazed glass-panel front door.



Entrance Hall

Double-glazed window, solid hardwood front door, under-stairs space with bespoke fitted storage by Clever Closets UK. Smoke alarm and stairs ascending to first-floor.

Ground-Floor W.C

Single-casement double-glazed window, double-glazed Velux window, sensor down-lights, low-level W.C with dual-flush, pedestal wash-hand basin with mixer tap and storage unit underneath, part-tiled walls to splash-back and light-oak engineered wood flooring.



Kitchen

Two-casement double-glazed window, stainless-steel sink with drainer & mixer tap, wall & base level units with LED strip lighting to work-surface area and matching splash-back, space for free-standing fridge/freezer, integrated dish-washer, four-ring induction electric hob and light-oak engineered wood flooring.



Lounge/Dining Room

Dual-aspect, four-casement double-glazed window, two radiators, single-casement double-glazed window, double-glazed window, coving, light-oak engineered wood flooring and double-glazed glass-panel door leading out to rear courtyard.



Landing

Frosted-effect double-glazed single-casement window, smoke alarm, loft-hatch and stairs descending to ground-floor.

These particulars are intended to give a fair description of the property but their accuracy cannot be guaranteed, and they do not constitute an offer of contract. Intending purchasers must rely on their own inspection of the property. None of the above appliances/services have been tested by ourselves. We recommend purchasers arrange for a qualified person to check all appliances/services before legal commitment.

BOND & SHERWILL

Woodman Road

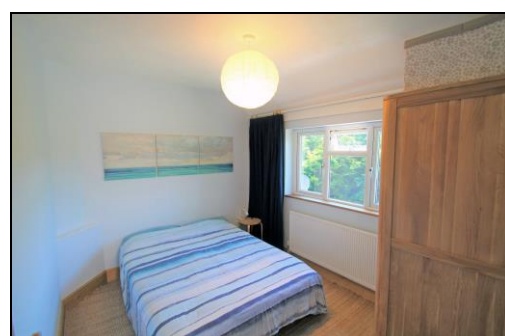
Master Bedroom

Four-casement double-glazed window and radiator.



Bedroom Two

Triple-casement double-glazed window and radiator.



Bedroom Three

Single-casement double-glazed window and radiator.

Bathroom

Panel-enclosed bath with shower over bath, wash-hand basin with mixer tap, low-level W.C, single-casement double-glazed opaque window, radiator, vinyl-flooring and mostly-tiled walls.



Separate Home Office

Double-glazed Velux window, motion sensor down-lights, radiator, Vailant boiler, full plumbing for washing machine, glass-panel double-glazed door leading to rear courtyard.

Garage

Electric roller door with mounted wall-control & two remotes, lighting and power.

Courtyard Garden

The courtyard garden benefits from being south-west facing.



These particulars are intended to give a fair description of the property but their accuracy cannot be guaranteed, and they do not constitute an offer of contract. Intending purchasers must rely on their own inspection of the property. None of the above appliances/services have been tested by ourselves. We recommend purchasers arrange for a qualified person to check all appliances/services before legal commitment.

BOND & SHERWILL

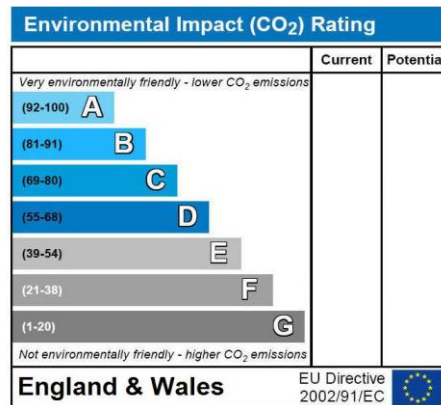
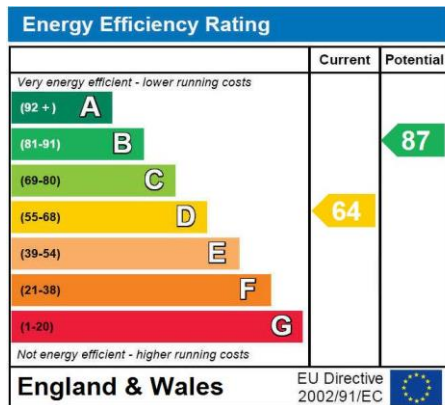
Woodman Road



TOTAL FLOOR AREA : 863 sq.ft. (80.1 sq.m.) approx.

Whilst every attempt has been made to ensure the accuracy of the floorplan contained here, measurements of doors, windows, rooms and any other items are approximate and no responsibility is taken for any error, omission or mis-statement. This plan is for illustrative purposes only and should be used as such by any prospective purchaser. The services, systems and appliances shown have not been tested and no guarantee as to their operability or efficiency can be given.
Made with Metropix ©2023

Energy Performance Certificate



These particulars are intended to give a fair description of the property but their accuracy cannot be guaranteed, and they do not constitute an offer of contract. Intending purchasers must rely on their own inspection of the property. None of the above appliances/services have been tested by ourselves. We recommend purchasers arrange for a qualified person to check all appliances/services before legal commitment.